

# **DONNA JONES**

## **HAMPSHIRE AND ISLE OF WIGHT**

### **2025/26**



**MORE POLICE**  
**SAFER STREETS**

DONNA JONES

**POLICE & CRIME**  
**COMMISSIONER**

HAMPSHIRE & ISLE OF WIGHT

This year, your council tax contribution will help fund **90 more police officers for Hampshire & Isle of Wight Constabulary**. Once recruited it will mean the force will have over 3,500 police officers; the highest number in over a decade.

The Constabulary is one of the fastest improving forces in the country. It is leading the way in neighbourhood policing with the successful implementation of my Local Bobby scheme; charge rates have gone up by 34%, crime has gone down by almost 7,000 crimes a year, and the force now delivers one of the best 101 and 999 services in the country. This means your calls to the police are answered quicker than ever before.

Seven more police stations have reopened in the past year, making policing services more accessible. More officers are on the beat, more police stations are open, and reporting crime is easier, ensuring safer communities.

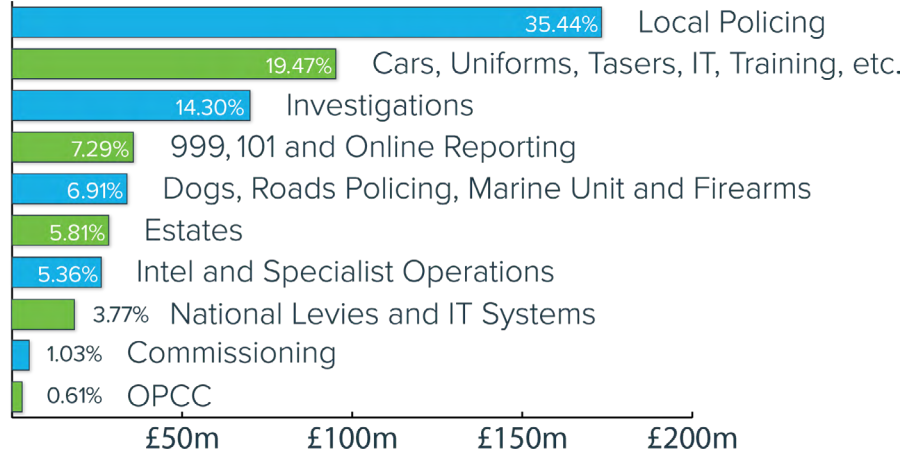


**Donna Jones**  
Police and Crime Commissioner

## TOTAL COST OF POLICING

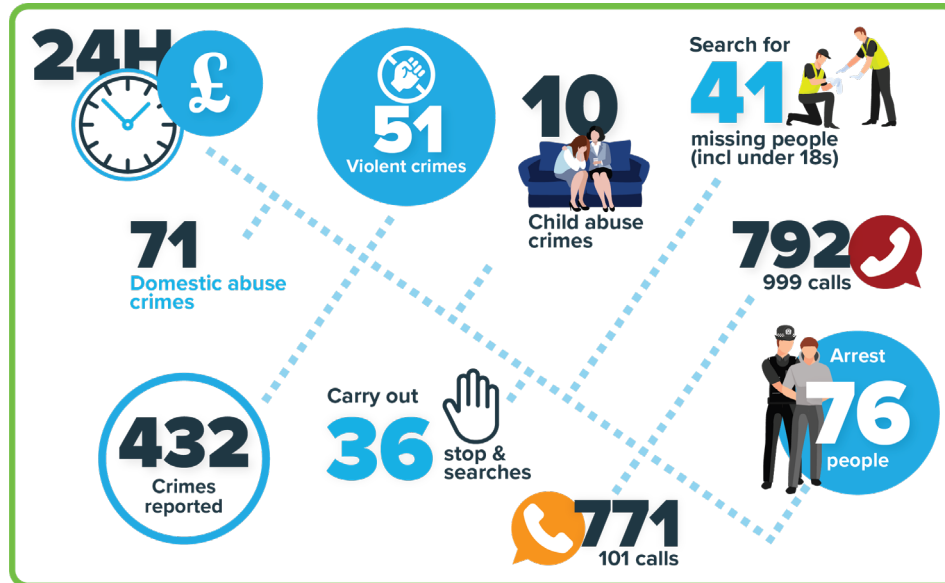
### 2025/26

The PCC's overall budget of £494.3million is made up of 59% funding from the Home Office grant and 41% from the policing element of your council tax.



## A DAY IN THE LIFE OF HAMPSHIRE & ISLE OF WIGHT CONSTABULARY

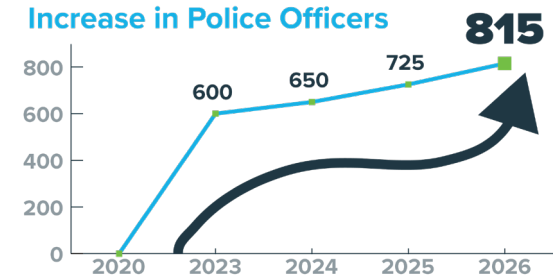
Illustrative figures from 2024



| Band               | A    | B     | C     | D     | E     | F     | G     | H     |
|--------------------|------|-------|-------|-------|-------|-------|-------|-------|
| Monthly Increase £ | 0.78 | 0.91  | 1.04  | 1.17  | 1.43  | 1.69  | 1.94  | 2.33  |
| Annual Increase £  | 9.33 | 10.89 | 12.44 | 14.00 | 17.11 | 20.23 | 23.33 | 28.00 |

## 90 MORE POLICE OFFICERS

This year the investment in policing through your council tax will provide an additional **£10million for Hampshire & Isle of Wight Constabulary**.



The extra **90 police officers** for 2025-26 will mean I have funded **815 additional police officers** since 2020. This investment will also support the expansion of my Local Bobby scheme and increase vital police visibility that makes **communities safer**.

The Local Bobby scheme means **every community has a named police officer** they can contact directly. Their name, phone number and email address can be found by scanning the QR code on the back of this leaflet.

## CRIME RATES DOWN (Oct 23 - Sept 24)



# YOUR NEIGHBOURHOOD POLICE

## POLICE STATIONS

**It's now easier to report crime and talk to your local officers after seven police stations were opened to the public last year.**

The Commissioner's commitment to open 10 more police stations is on track to ensure every district in the region has a publicly accessible police station. You can find out which stations are on the list by visiting our website.

**CONTACT DONNA JONES,**  
POLICE AND CRIME COMMISSIONER



 01962 871595

 [opcc@hampshire.police.uk](mailto:opcc@hampshire.police.uk)

Visit [www.hampshire-pcc.gov.uk](http://www.hampshire-pcc.gov.uk) for the latest news from your PCC.

## LOCAL BOBBIES

**Did you know you have a named and contactable local police officer? The Local Bobby scheme was launched by Donna Jones to bring back visible and accessible policing to communities.**

Officers' names, email addresses and phone numbers are published online for residents via a simple postcode search. It provides every city, town and village with a named and contactable local police officer.

